

# UNMISTAKABLY CREATIVE



Chetan Walia

# WHAT IS CREATIVE?

Novel & Useful

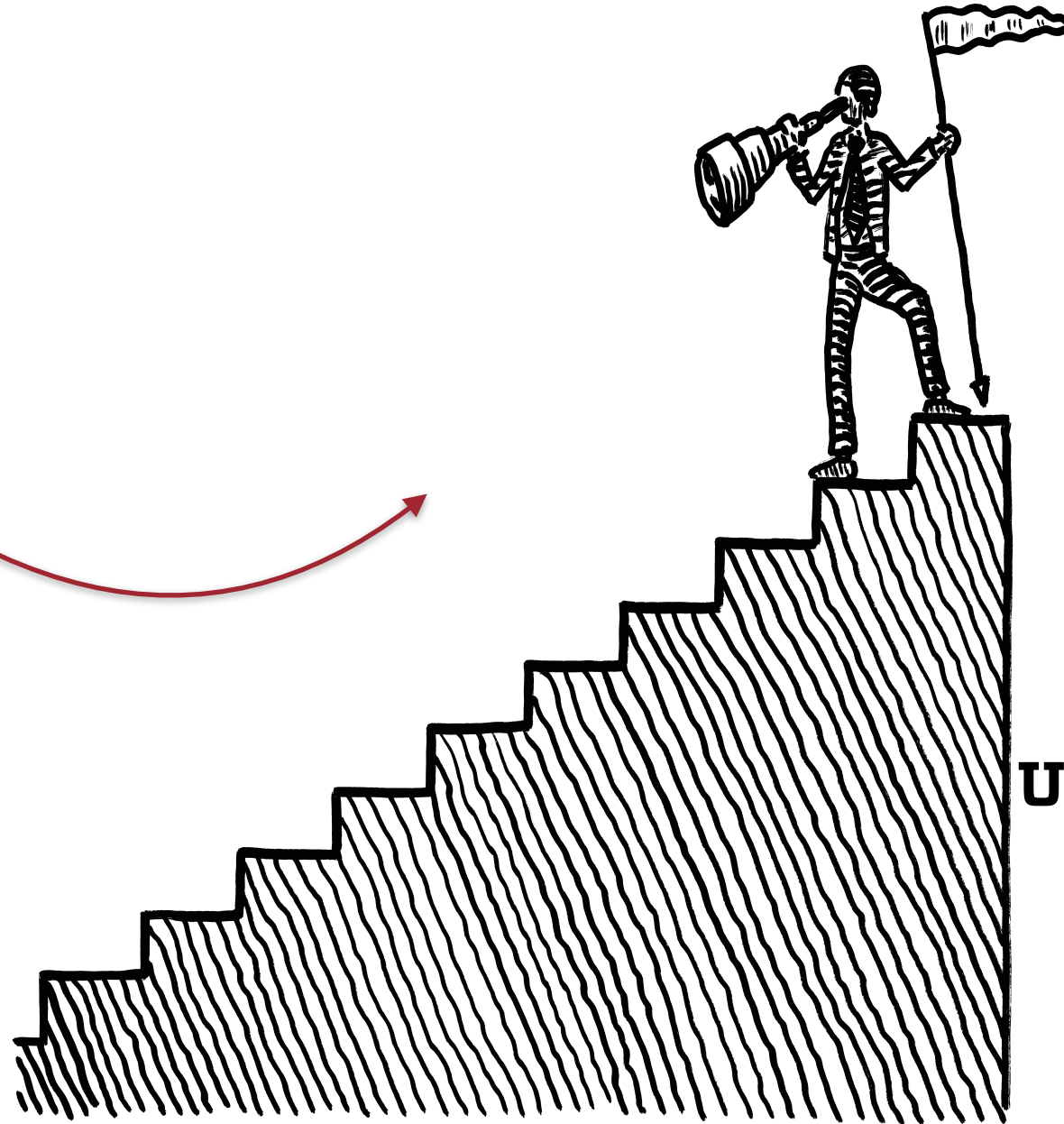
Goal Directed

Surprise

Non-Obvious

Unique

Novel & Useful



**UNMISTAKABLY  
CREATIVE**

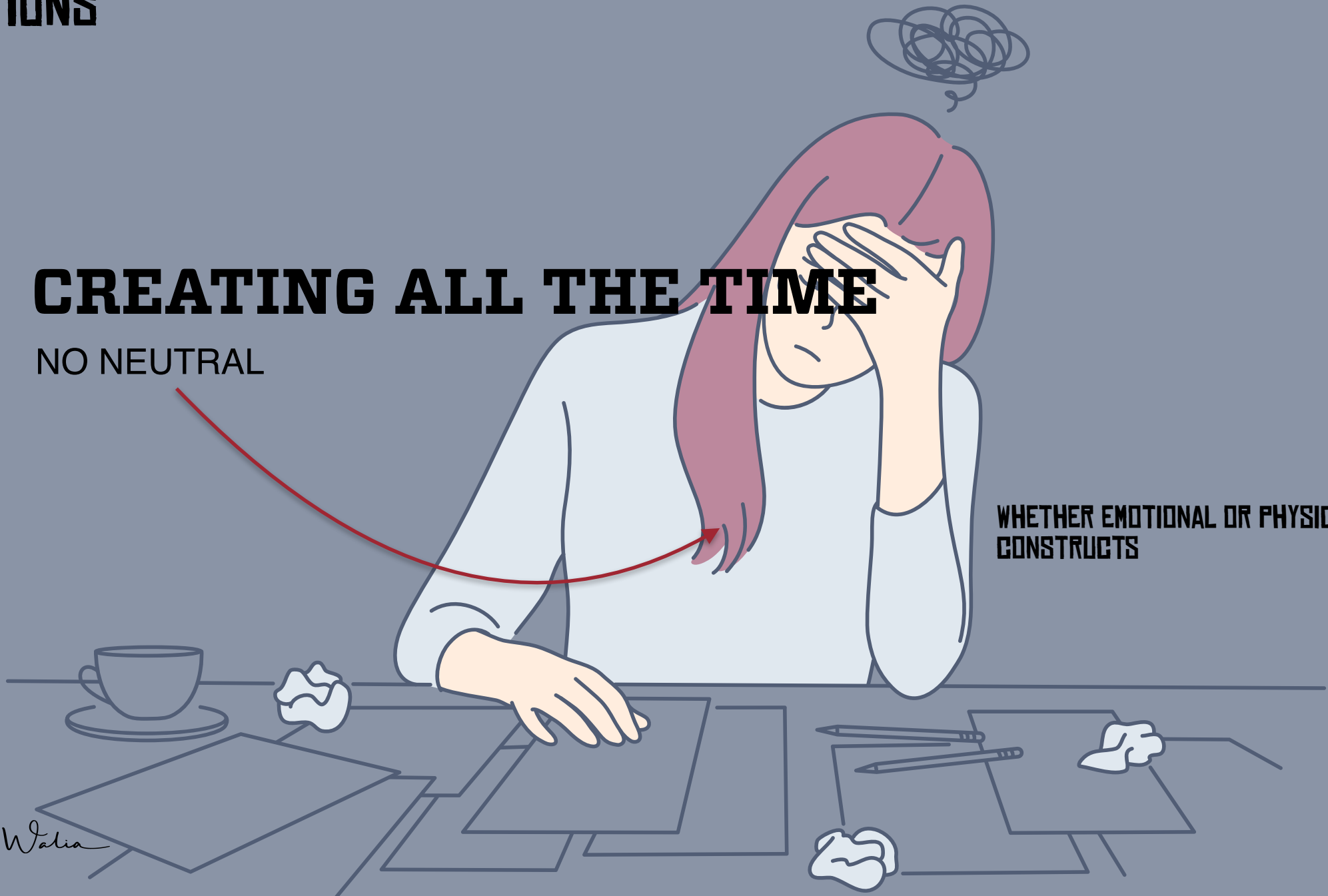
# CREATIONS



## CREATING ALL THE TIME

NO NEUTRAL

WHETHER EMOTIONAL OR PHYSICAL  
CONSTRUCTS



Chetan Walia

EVERYTHING AND EVERYONE **IS** ENVIRONMENT

**INSPIRING**

**EXPIRING**

**+ ENERGY**

**- ENERGY**

House  
Office  
Desk  
Family  
Car  
People  
Finances

# ENVIRONMENTS



Chetan Walia

# ENVIRONMENTS



Our memetic environments consist of the books we read, the podcasts we listen to, the websites we visit, and all of the information we consume.

**When you stop consuming so much, you'll find yourself creating, otherwise you are simply re-creating**

**BELIEFS**

**ENCOURAGING**

**CREATION**

**TOXIC**

*Chetan Walia*

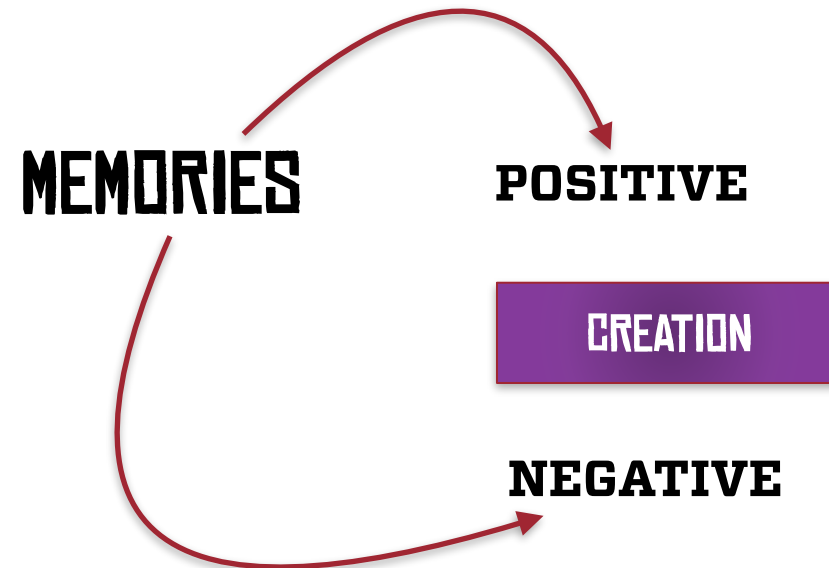
# ENVIRONMENTS



Home  
Office  
Possessions  
Objects  
Wardrobe  
Car

**In every physical environment, you have tolerations**

- Cracked phone screens
- Torn clothes
- Slow computers
- A check engine light



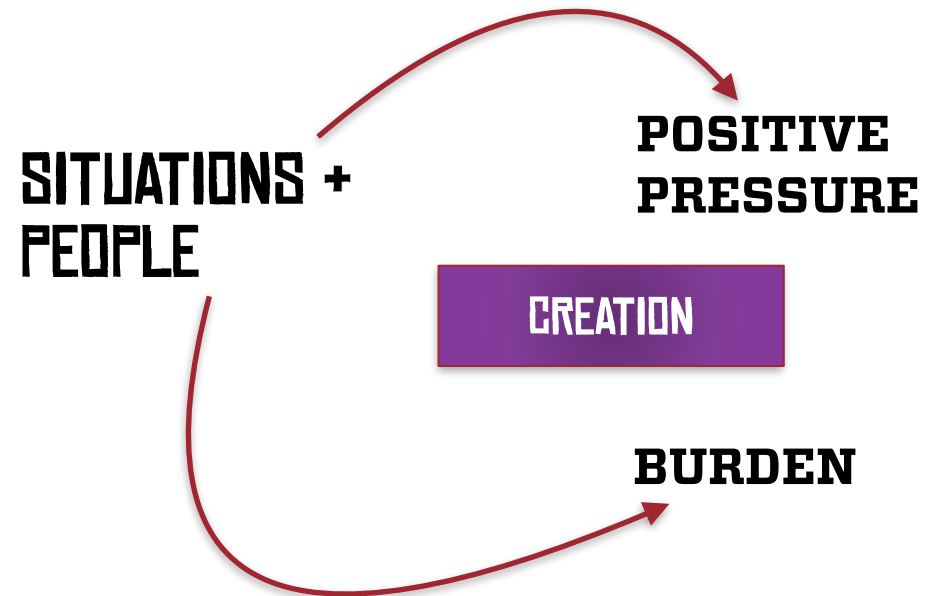
# ENVIRONMENTS



It is not the cash you get, it is the relationship with the cash and environment it is coming to you in

## Deal with unprofitable memories

- Banks
- Currency
- City
- Regrets



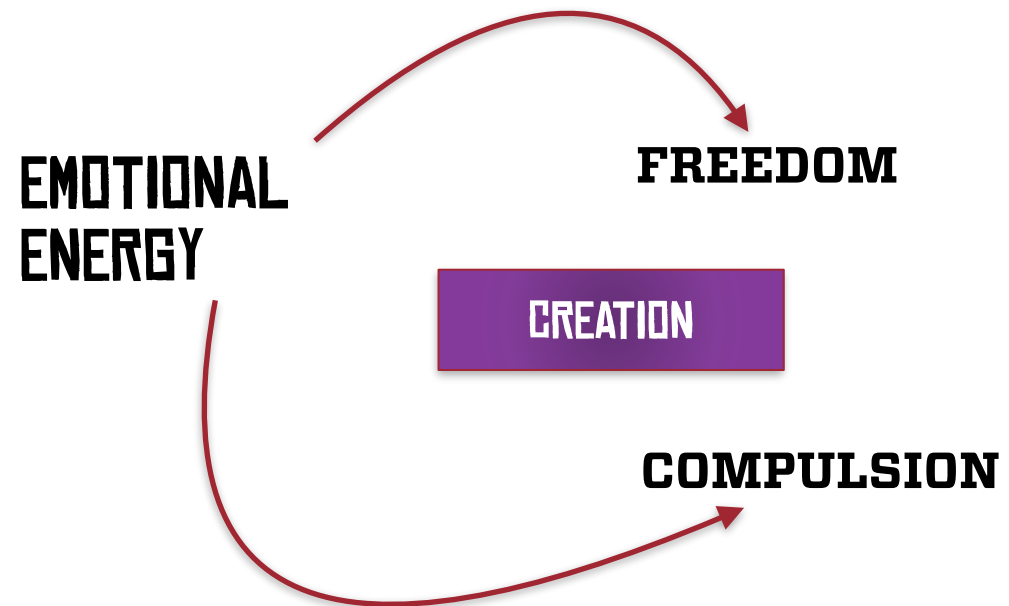


# ENVIRONMENTS



*The people you surround yourself with can either be the rise or fall of you — Dr. Dre*

- If they're toxic and constantly negative, they will hold us back.
- If they're resentful, envious, or jealous they will hold us back.
- If they're condescending, they will hold us back.



# ENVIRONMENTS



*Ecosystem is your network  
People around you is network  
Dominant conversations is network*

**Your network is the architect of  
your reality**

**HEADSPACE**

**(-) MONEY/COMPARISONS**

**CREATION**

**(+) CONCERN / LEARNING**

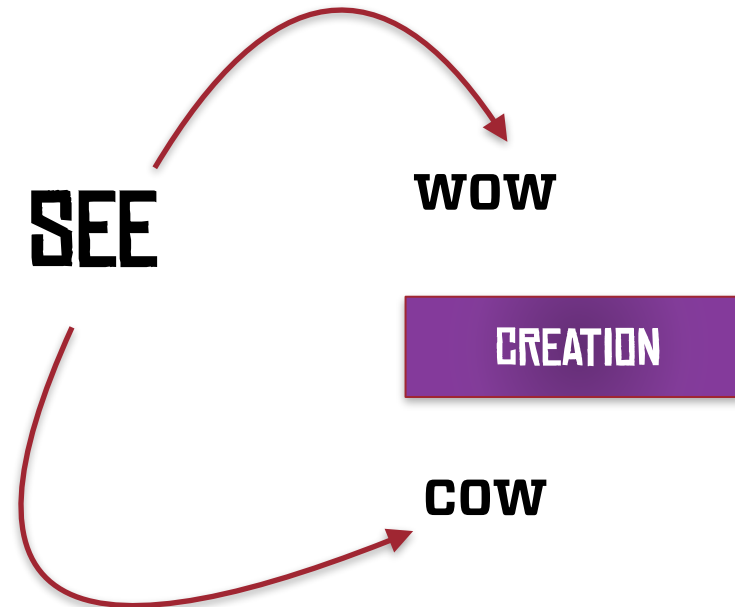
*Chetan Walia*

# ENVIRONMENTS



*ALL CREATION BEGINS IN THE MIRROR*

**The tool that makes everything possible is the body**



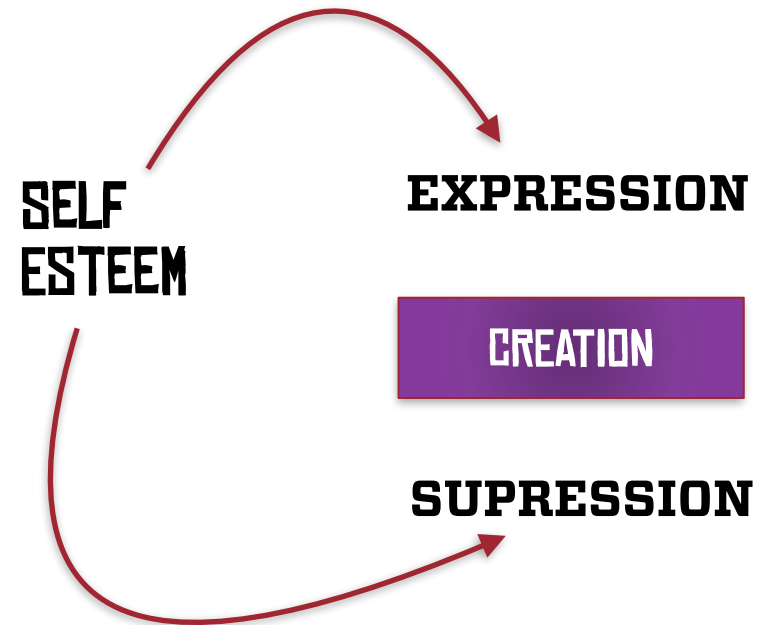
*Chetan Walia*

# ENVIRONMENTS



*The way you see yourself is the way others will see you and treat you*

**Self Image**  
**Strengths**  
**Responsibilities**  
**Boundaries**  
**Attractions?**  
**Letting go**



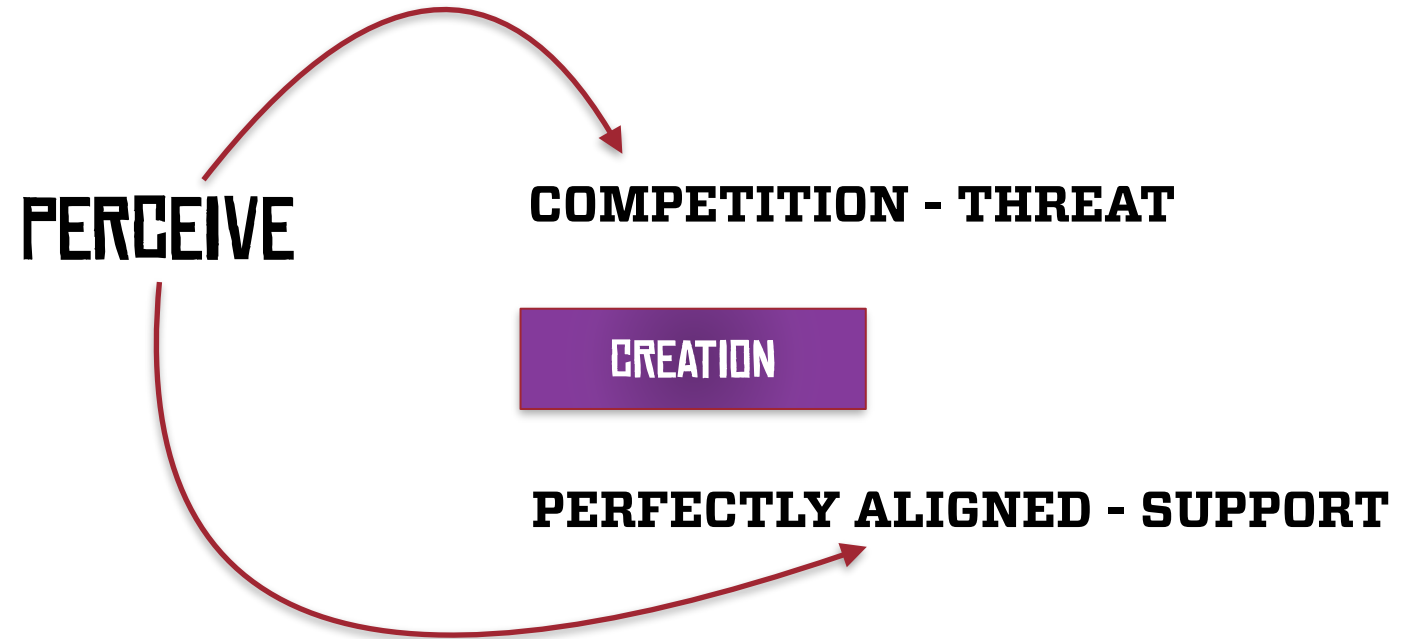
Chetan Walia

# ENVIRONMENTS



*How do you see nature?*

**Nature is intelligence in action**



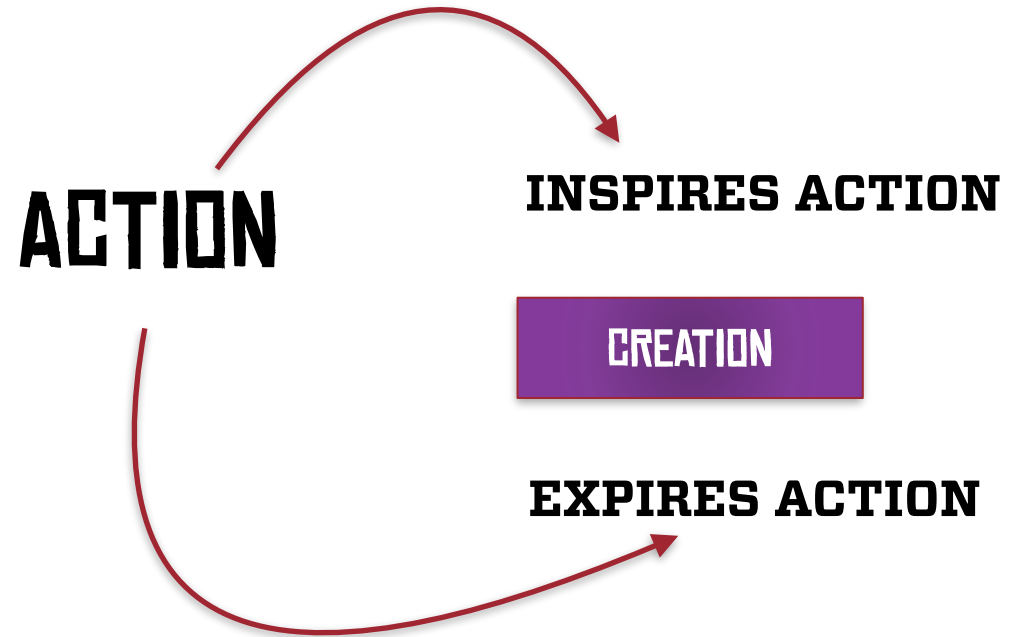
# ENVIRONMENTS



*Religion is time consuming. Spirituality is accessing a higher intelligence*

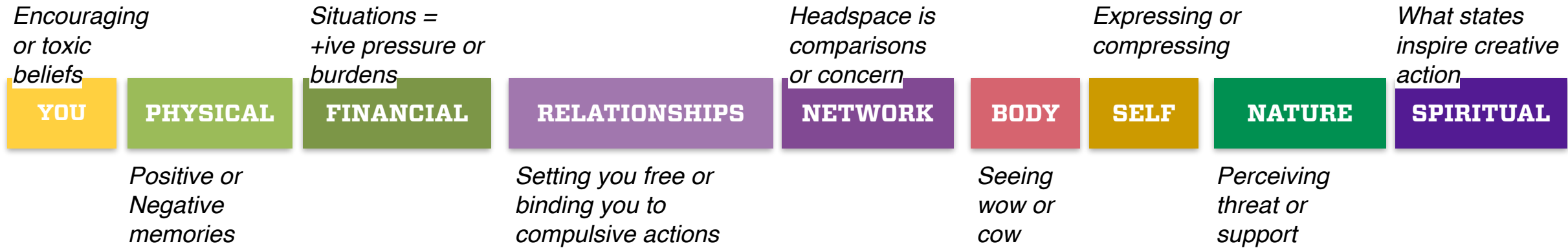
**It is not about rituals. It is anything that puts you in access.**

**It could be .....**



*Chetan Walia*

# ENVIRONMENTS

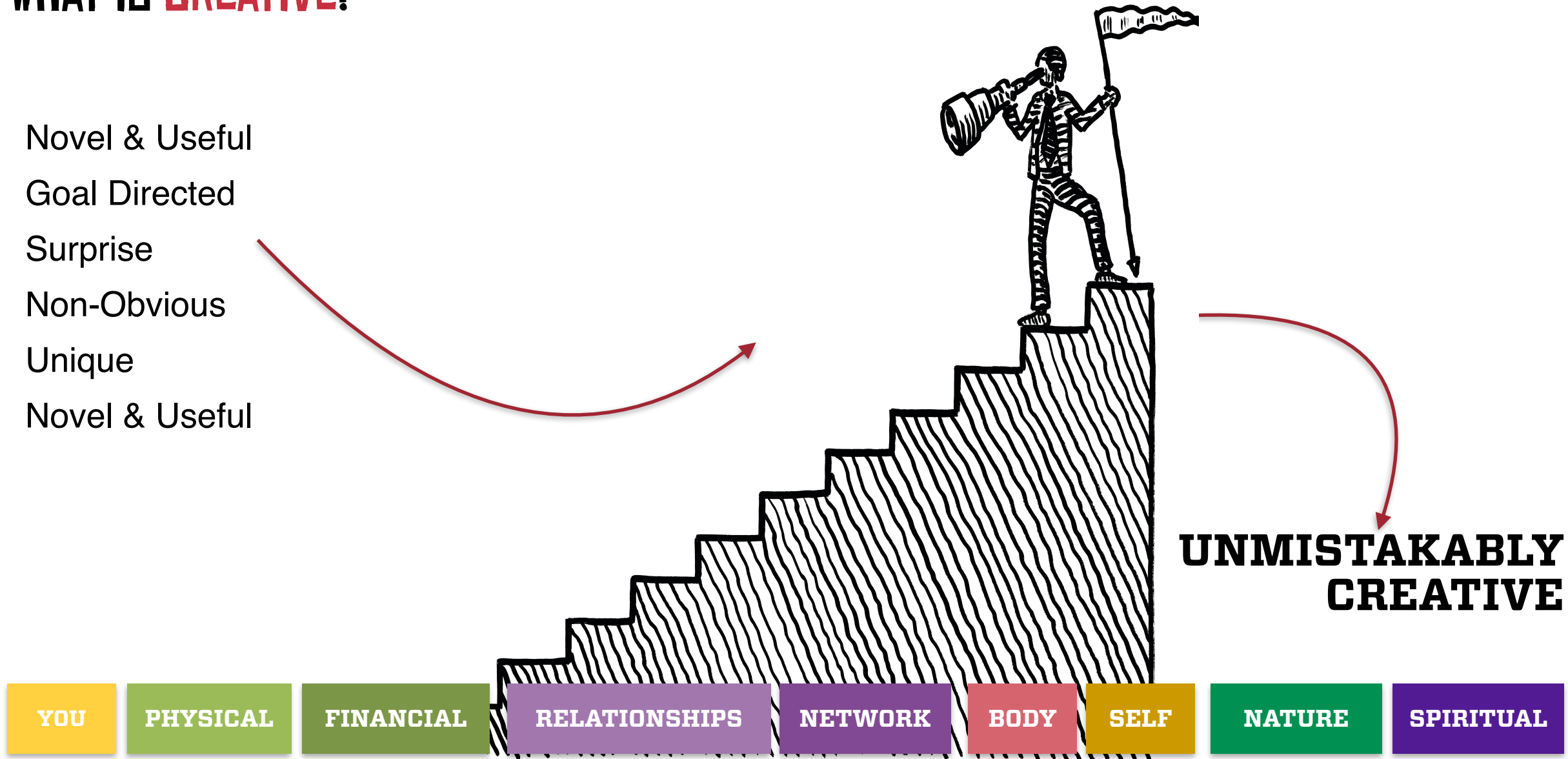


**You can't upgrade one environment and not it have it affect the others.**

**If you upgrade one environment, it will send a ripple through all the others.**

# WHAT IS CREATIVE?

Novel & Useful  
Goal Directed  
Surprise  
Non-Obvious  
Unique  
Novel & Useful





# UNMISTAKABLY CREATIVE

WEBINAR



Chetan Walia